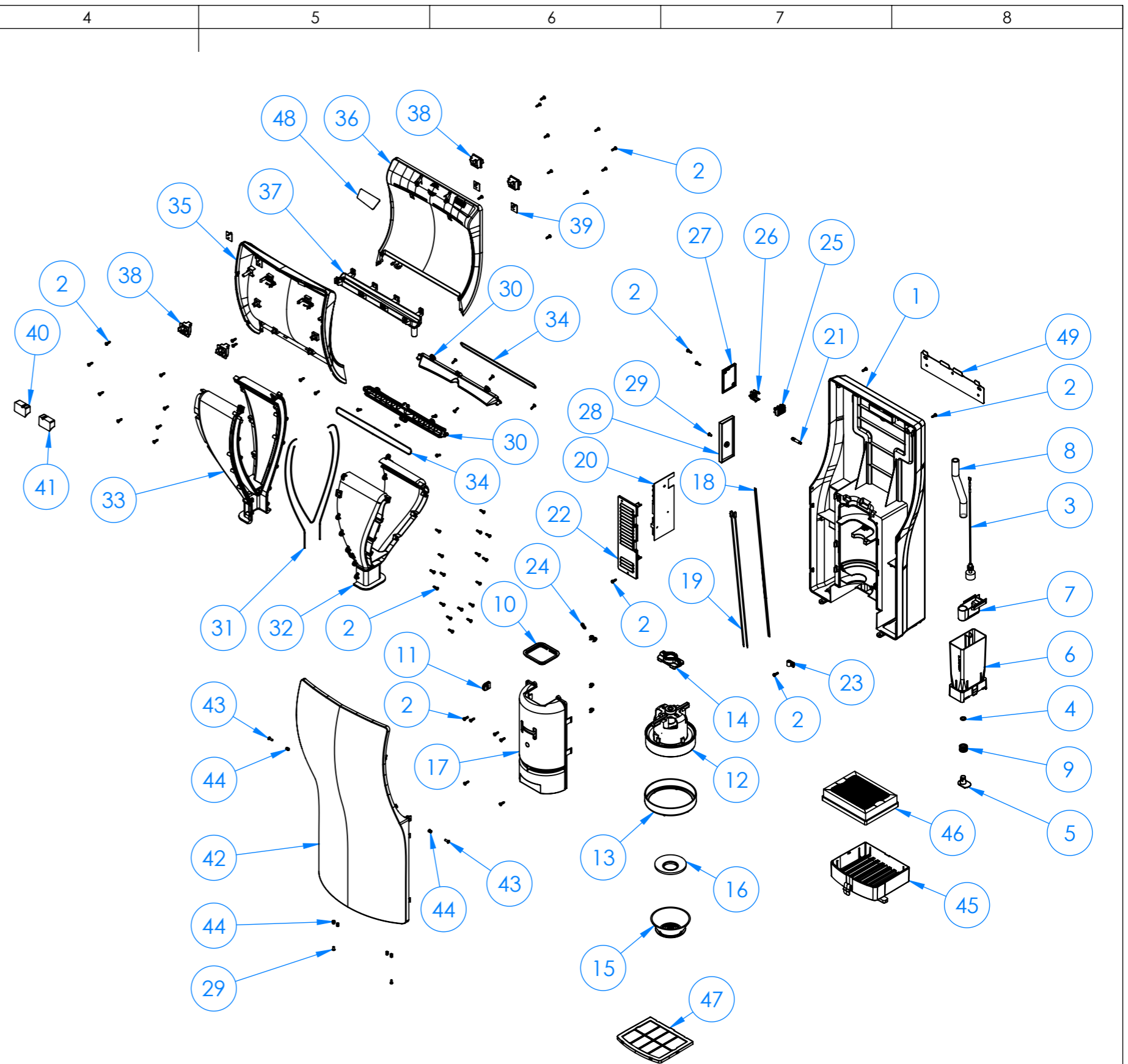


| 1 | | 2 | | 3 | |
|-----|-----------|--|----------------------------------|----------------------------------|--|
| N.º | Cnt. Qnt. | Referencia / Reference | Denominación | Description | |
| A | 1 | 9333006SMD | Base | Base | |
| | 59 | 9421010UL | Tornillo (CL81Z Ø4,1x12) | Screw (CL81Z Ø4,1x12) | |
| | 1 | 9441013SMD | Sonda Nivel Agua | Water Level Magnetic Reed Switch | |
| | 1 | 9451008SMD | Junta Tórica NBR (8x14x3) | O-Ring NBR (8x14x3) | |
| | 1 | 9453005SMD | Válvula Desagüe Depósito | Tank Drain Valve | |
| | 1 | 9351005SMD | Depósito Extraíble Agua | Extraible Water Tank | |
| | 1 | 9453004SMD | SopORTE Flotador | Water Level Bracket | |
| | 1 | 9452001SMD | Manguera Desagüe | Drain Tube | |
| B | 1 | 9431005SMD | Muelle Desague | Tank Drain Valve Spring | |
| | 1 | 9451009SMD | Junta Estanqueidad Motor | Motor Sealing Joint | |
| | 1 | 9451010SMD | Junta Pasacables | Output Joint Cable | |
| | 1 | 9111003SMD | Motor MCHFWDLFW+ (230V 5A) | Motor MCHFWDLFW+ (230V 5A) | |
| | 1 | 9371001UL | SopORTE Anterior Motor | Motor Front Support | |
| | 1 | 9371002UL | SopORTE Posterior Motor | Motor Rear Support | |
| | 1 | 9333014SMD | Boca Aspiración Radiada | Radiated Inlet Nozzle | |
| | 1 | Espuma Motor_M09A | Espuma Aro Motor | Motor Foam | |
| | 1 | 9333010SMD | Tapa Motor | Motor Cover | |
| | 1 | 9441010SMD | Cable Entrada/Wire PCB | PCB Wire | |
| C | 2 | 9441011SMD | Cable Entrada/Wire Motor UL | Motor Wire | |
| | 1 | 9121012SMD | Circuito Electrónico M14A | Electronic Control Unit M14A | |
| | 1 | 9441010SMD_Potenci. | Potenciómetro | Control Potentiometer | |
| | 1 | 9381001SMD | Tapa Circuito | Circuit Cover | |
| | 1 | 9481015SMD | Cable Clamp (N-4BE-BK) | Wire Clamp (N-4BE-BK) | |
| | 5 | 9441002SMD | Brida | Flange | |
| | 1 | 92264UL-NLT | Regleta 3 Vías | 3 Ways Terminal Block NLT | |
| | 1 | 9381005SMD | SopORTE Regleta | Terminal Block Support | |
| | 1 | 9381003SMD | Tapa Regleta | Terminal Block Cover | |
| | 1 | 9381002SMD | Tapa Mandos | Control Cover | |
| D | 3 | 82414 | Tornillo DIN7380 M4x8 | DIN7380 M4x8 Screw | |
| | 2 | 9321002SMD | Tobera Dualflow Plus | Nozzle | |
| | 1 | 94520003SMD | Hilo Tórico | Round Joint | |
| | 1 | 9333008SMD | Lateral Derecho | Right Side Air Conductor | |
| | 1 | 9333009SMD | Lateral Izquierdo | Left Side Air Conductor | |
| | 2 | 94520003SMD | Hilo Tórico Tobera | Round Joint | |
| | 1 | 9351001SMD | Embellecedor Exterior | Front Upper Cover (Outer) | |
| | 1 | 9351002SMD | Embellecedor Interior | Rear Upper Cover (Inner) | |
| | 1 | 9351003SMD | Recogeaguas | Water Basin | |
| | 4 | 9361001SMD | Visor Leds IR Dualflow Plus | IR Led Viewer | |
| E | 1 | 9121012SMD_Leds M12A | Leds (Emisor, recptr y señalzcn) | Leds (Emitter- receiver) | |
| | 1 | 9452004SMD | Tope Goma Izquierdo | Right Rubber Plug | |
| | 1 | 9452005SMD | Tope Goma Derecho | Left Rubber Plug | |
| | 1 | Ver tabla de versiones See versions table | Carcasa Frontal | Front Cover | |
| | 2 | 9421023SMD | Tornillo DIN7991 M4x10 | DIN7991 M4x10 Screw | |
| | 6 | 92802 | Inserto Casquillo | Insert Nut | |
| | 1 | 9381007SMD | Tapa Filtro | Air Filter Support | |
| | 1 | 9452006SMD | Cartucho Filtrante HEPA | HEPA Filter Pack | |
| | 1 | 9333012SMD | Panel Filtro Superior | Filter Top Panel | |
| | 1 | 9691012SMD | Etiqueta Visor Leds | Led Protector | |
| F | 1 | 9482004SMD | SopORTE Pared | Wall Support | |
| | 1 | 9411019SMD | Bolsa Tornillería | Screws Bag | |



| Tabla de versiones / Versions table | | | | |
|-------------------------------------|----------------------|----------|------------|----------------------------|
| Ref. conjunto Assembly ref. | Carcasa/ Front cover | | | |
| | Nº | Material | Ref. | Acabado / Finishing |
| M14A | 42 | ABS | 9333007SMD | Blanco / White |
| M14ACS | | | 9333013SMD | Gris Satinado / Satin gray |

mediclinics

**Secadora de manos Dualflow Plus
Hand dryer Dualflow Plus**

Fecha / Date: 13/05/2015

www.mediclinics.com